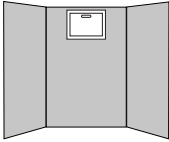
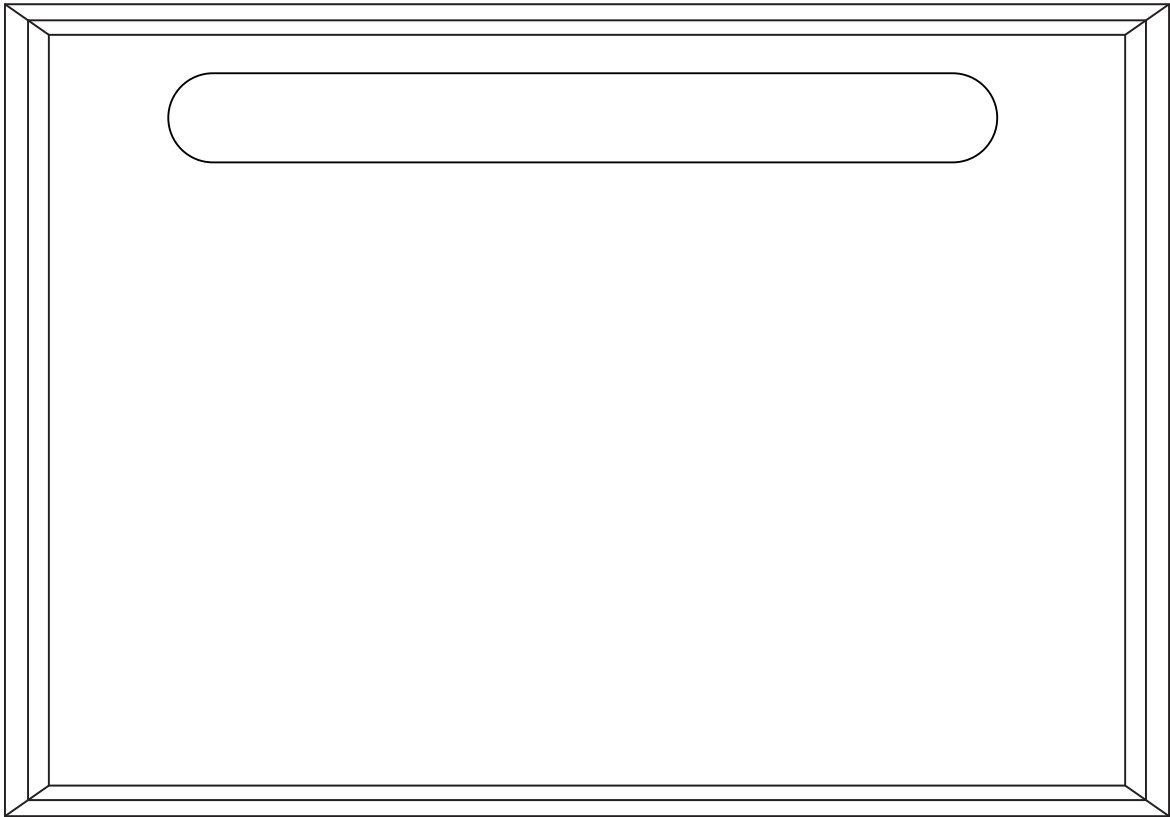
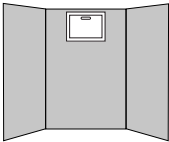


M1



M1





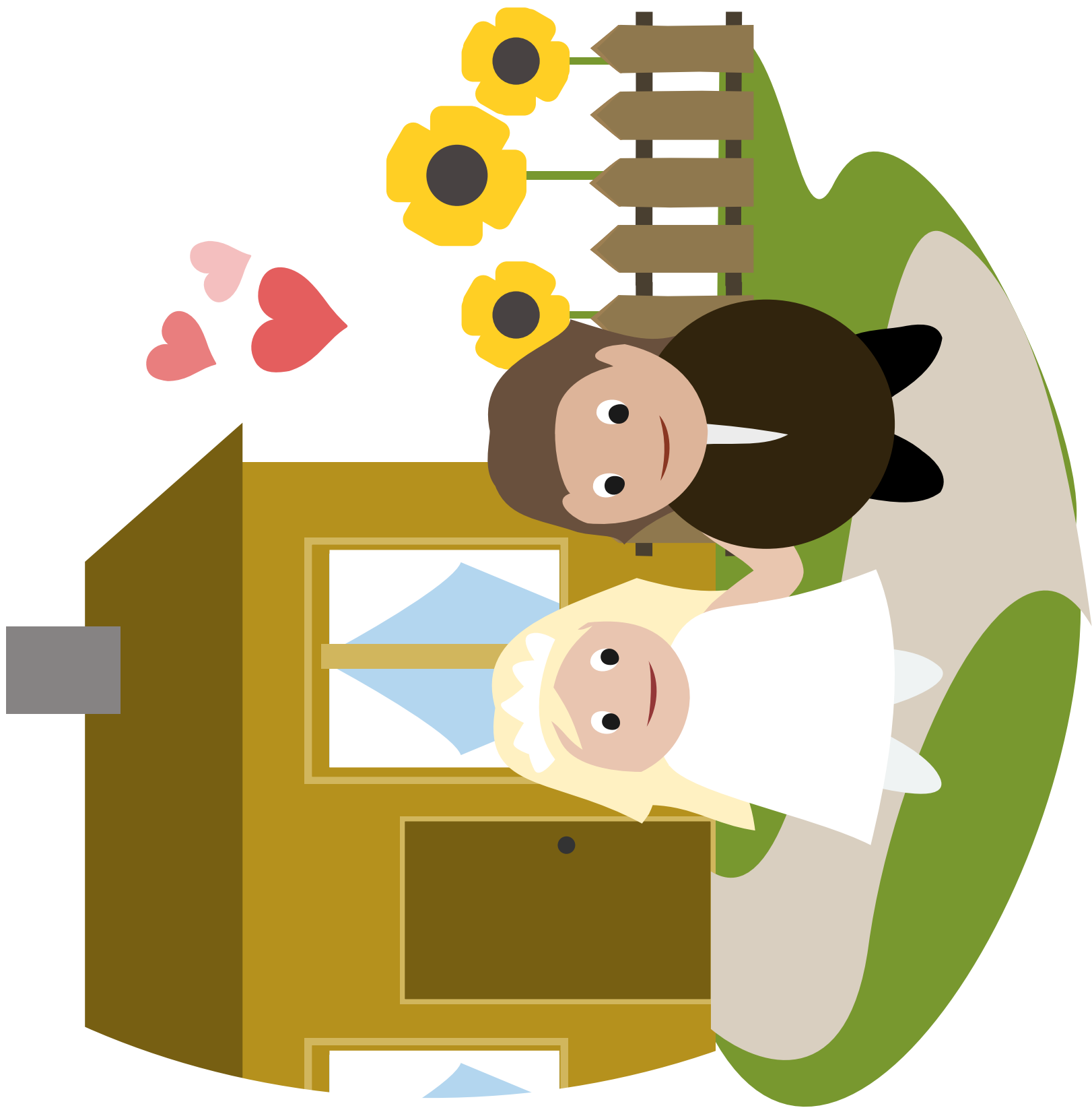
Two streams



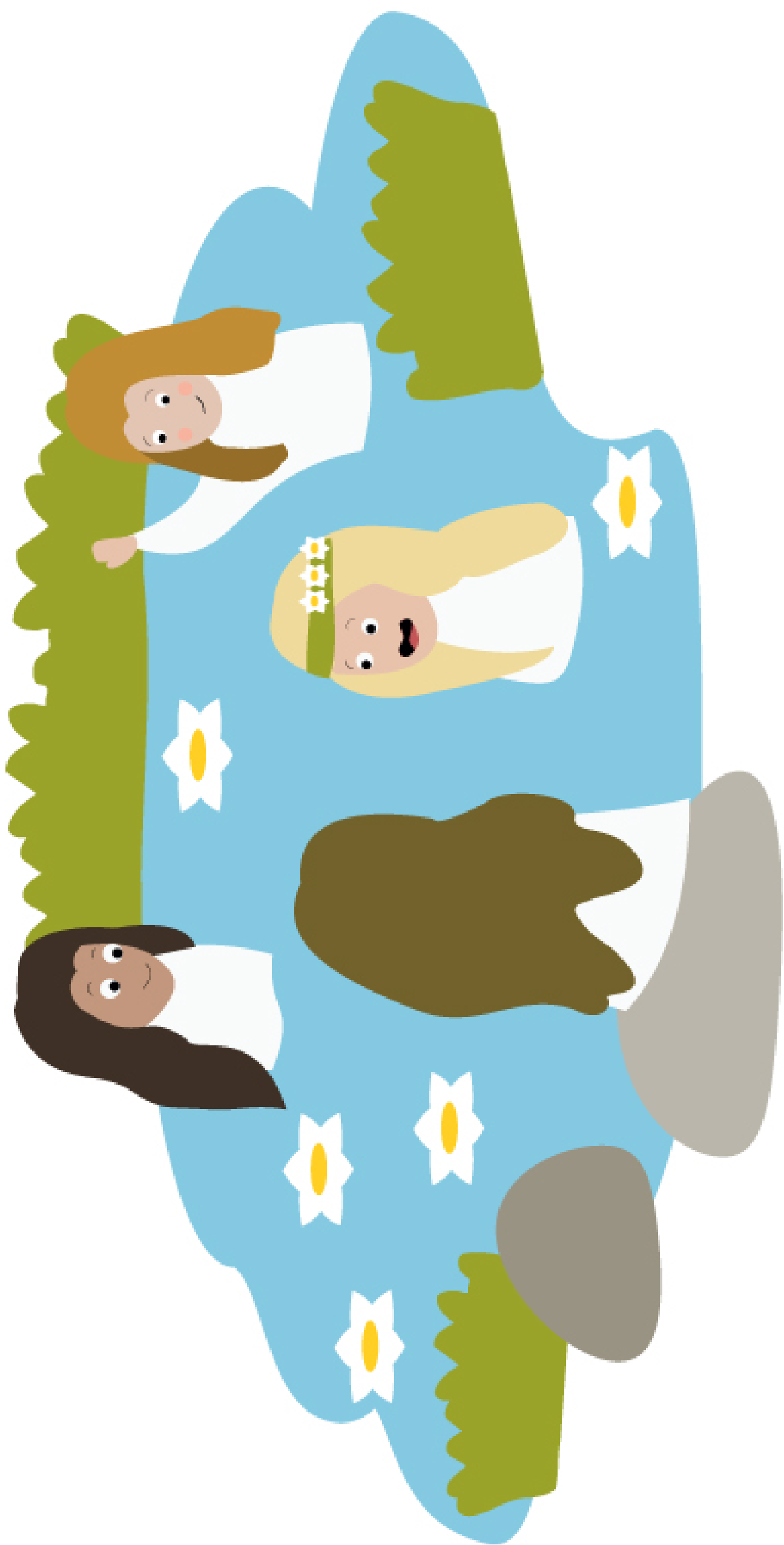
Vltava



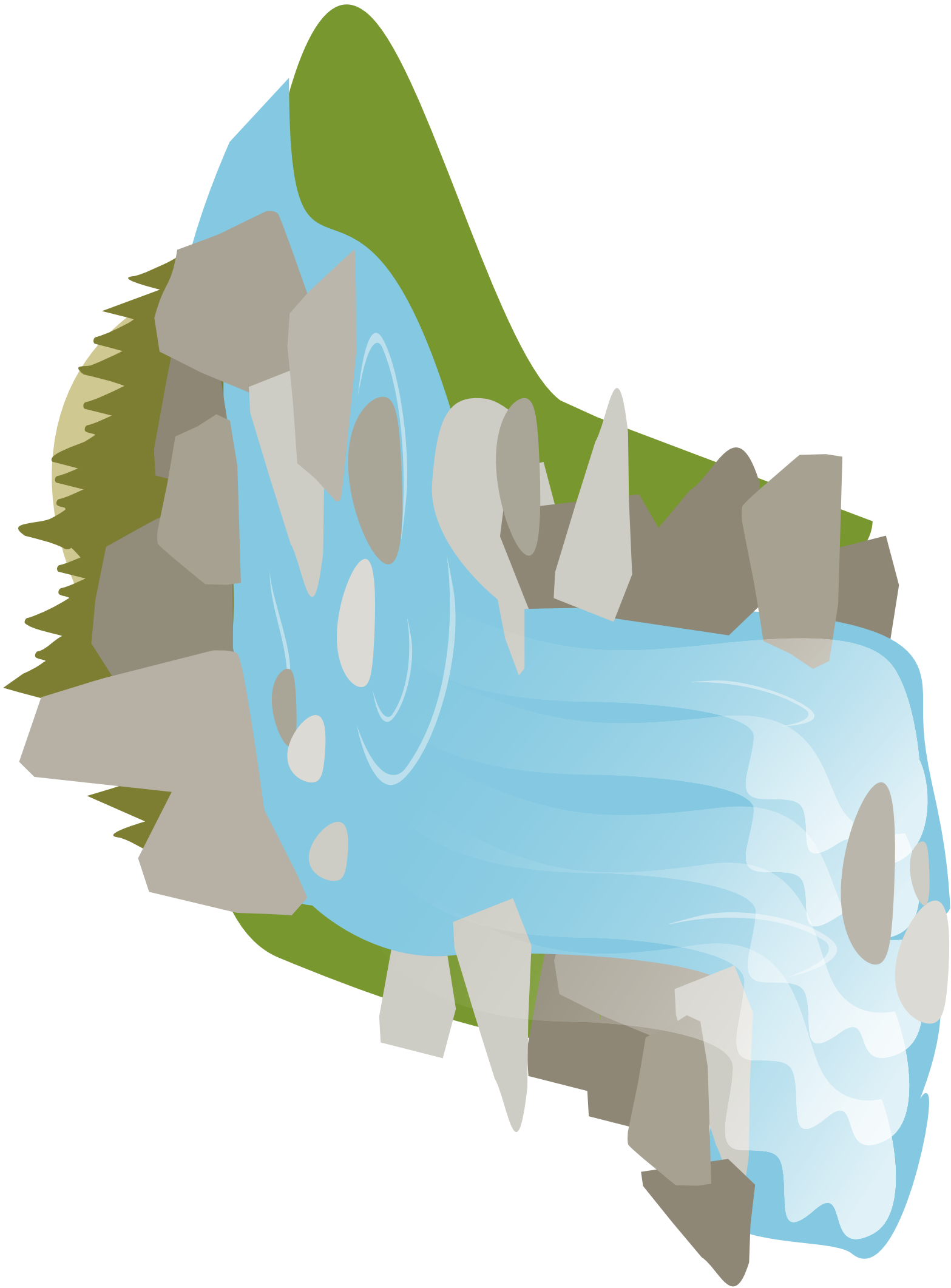
Forest hunt



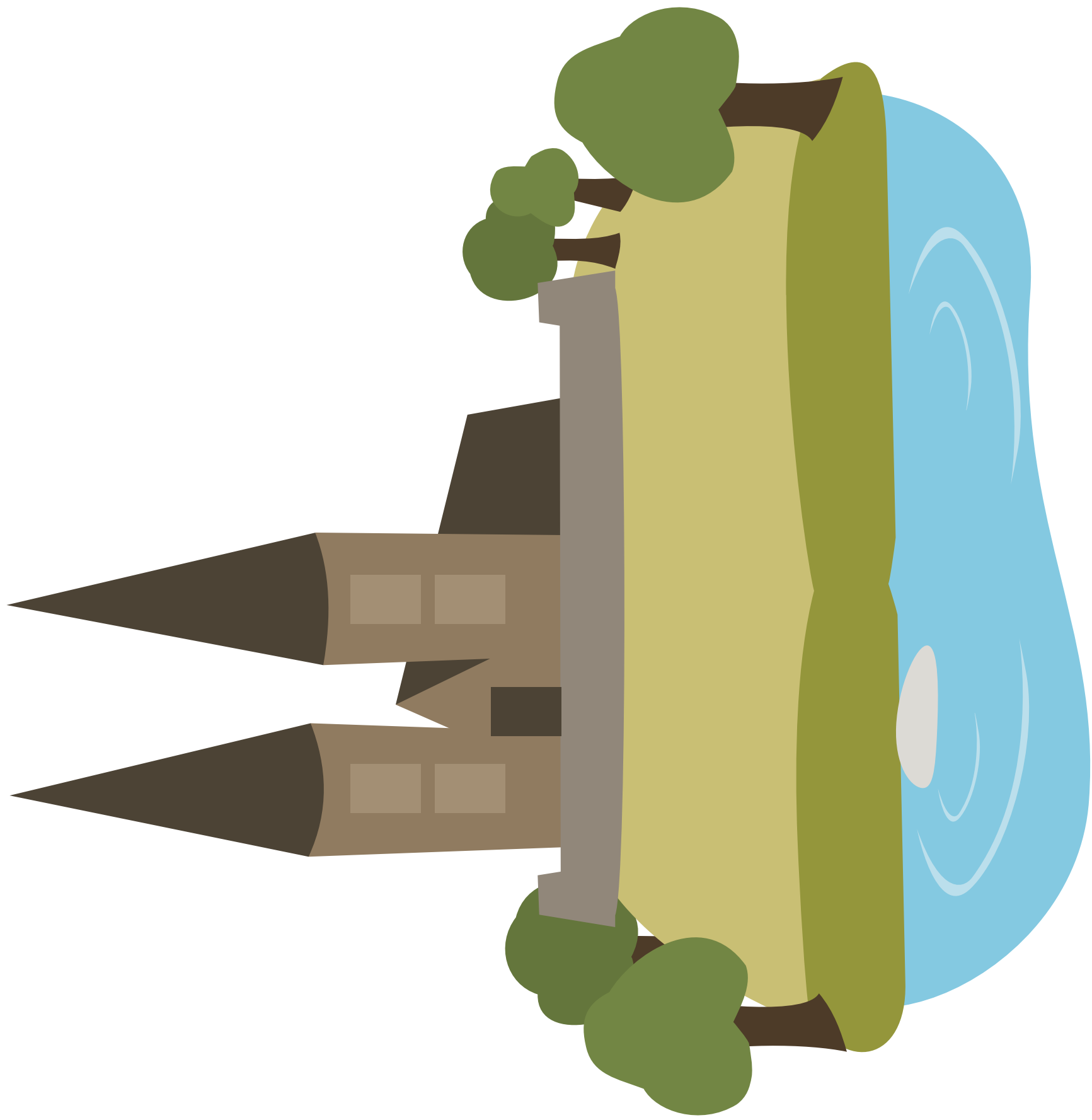
Peasant wedding



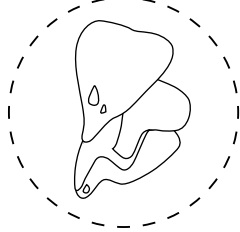
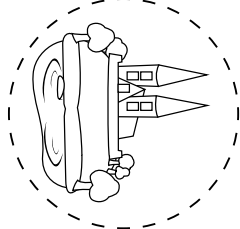
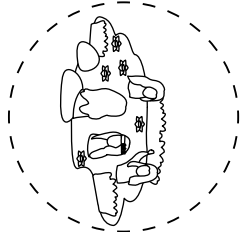
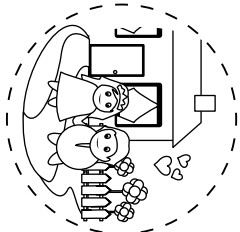
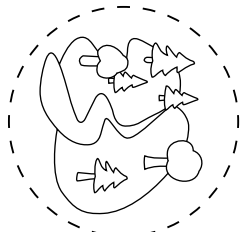
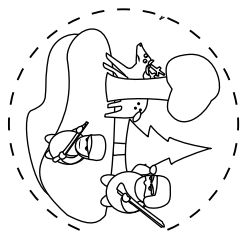
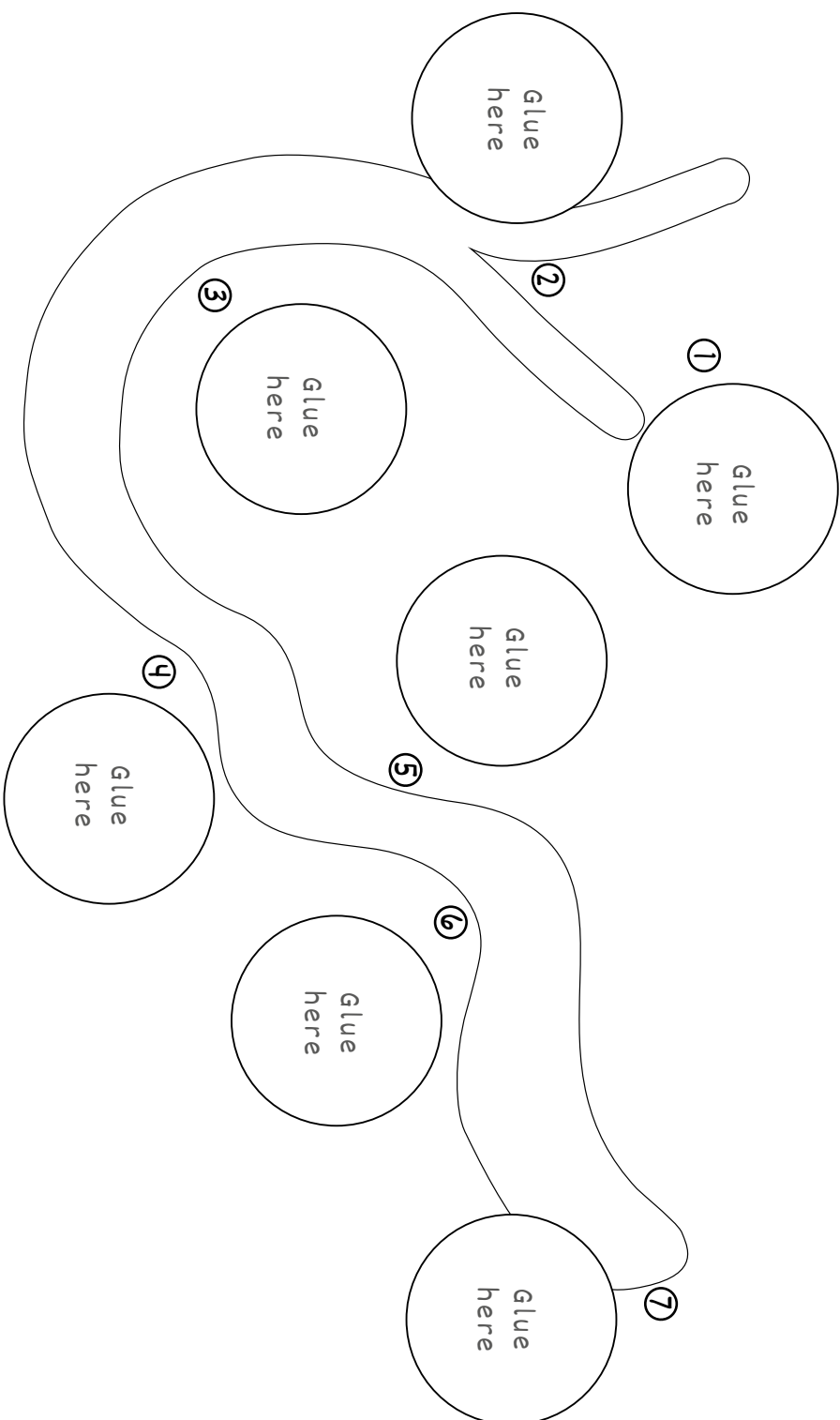
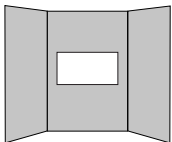
Nymphs

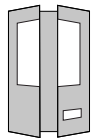


St John's rapids



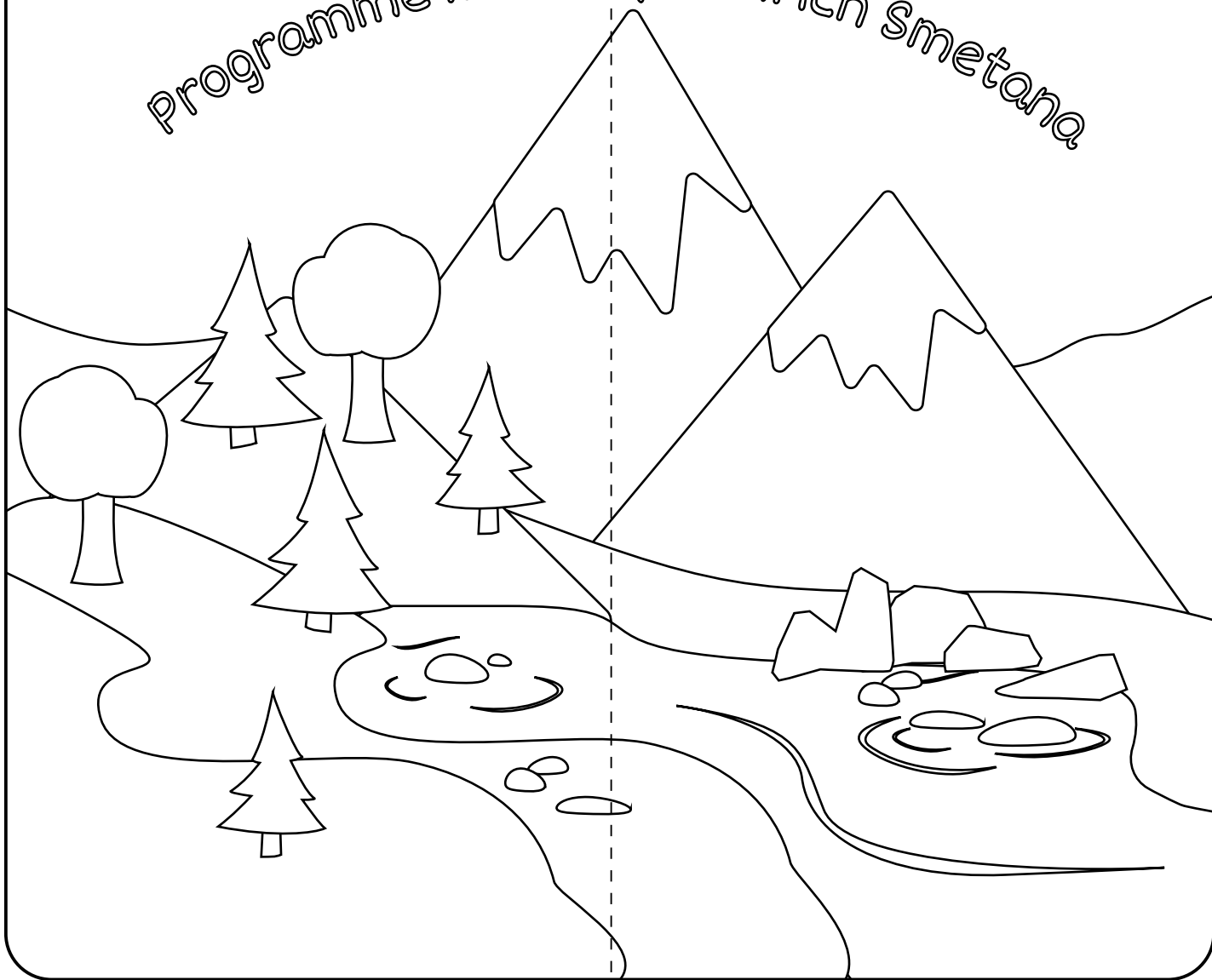
Praque





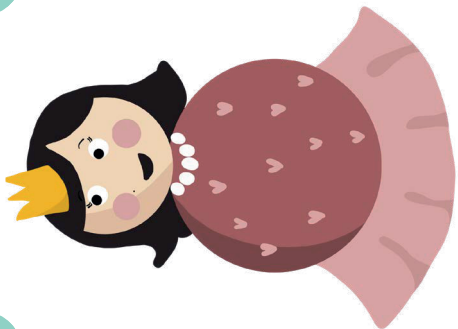
The Moldau

programme music by Bedřich Smetana

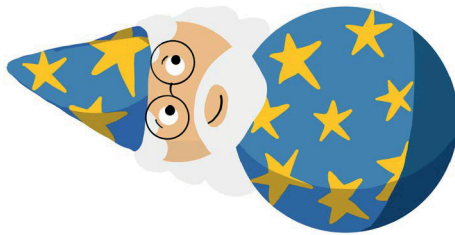


This lapbook belongs to:

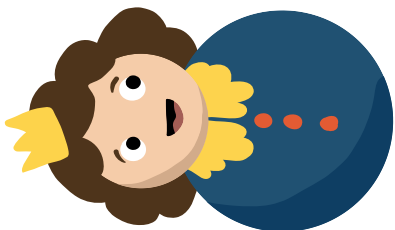
Fortissimo



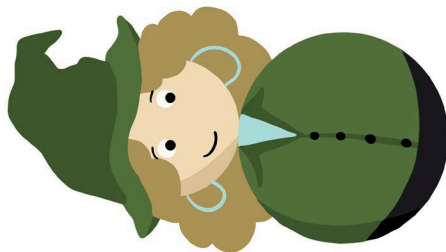
Character cards



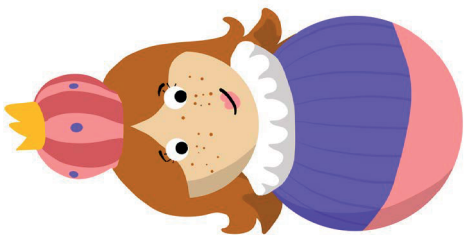
Character cards



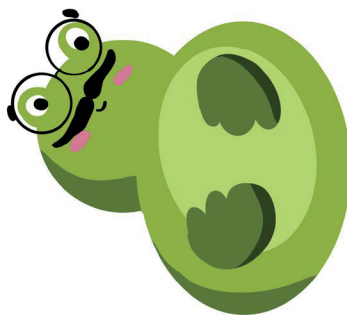
Character cards



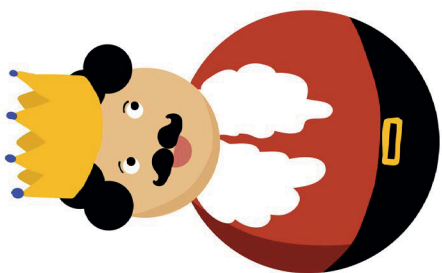
Character cards



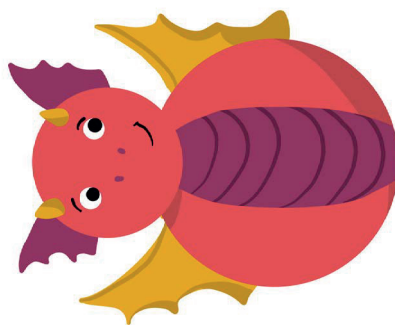
Character cards



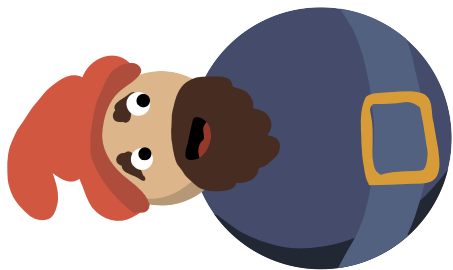
Character cards



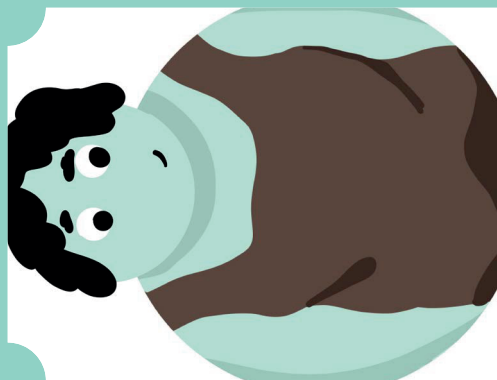
Character cards



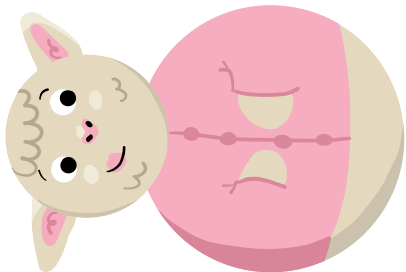
Character cards



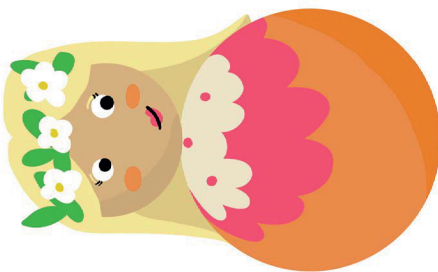
Character cards



Character cards



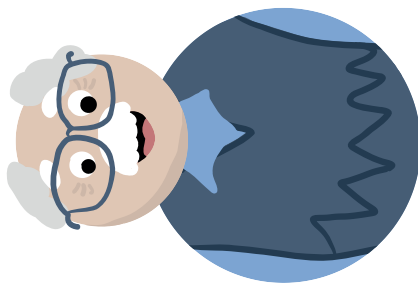
Character cards



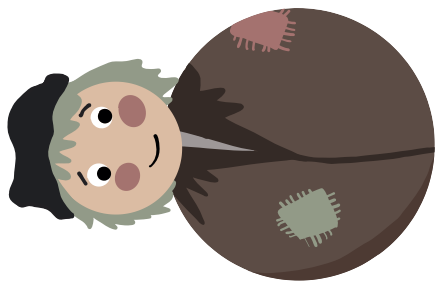
Character cards



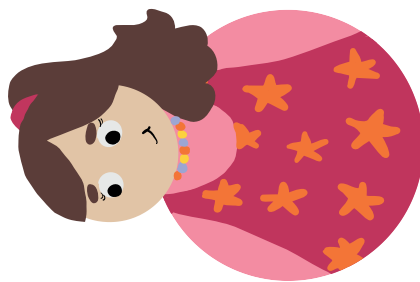
Character cards



Character cards



Character cards



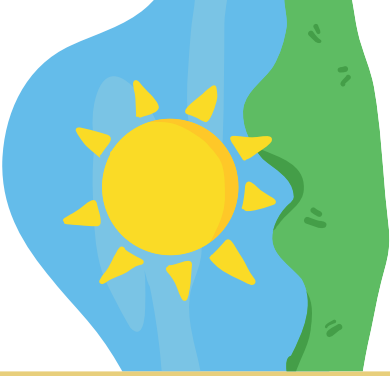
Character cards



Weather cards



Weather cards



Weather cards



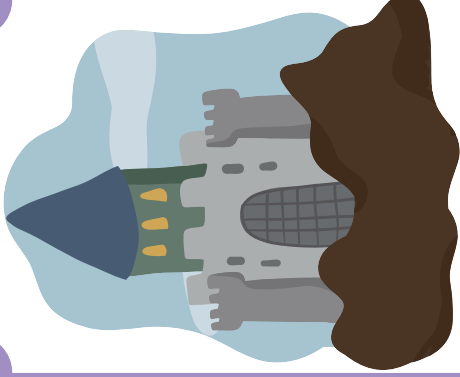
Weather cards



Weather cards



Weather cards



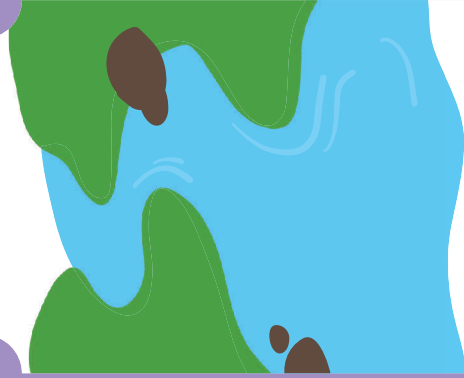
Location cards



Location cards



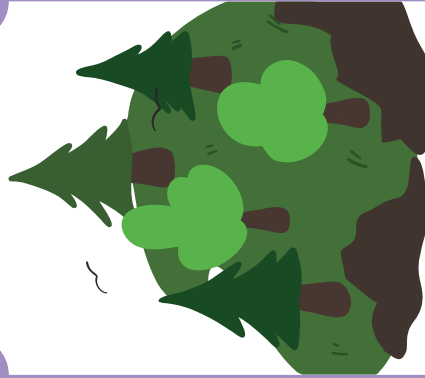
Location cards



Location cards

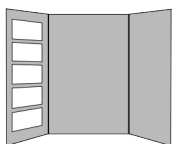


Location cards

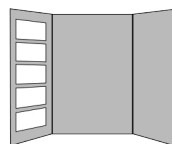


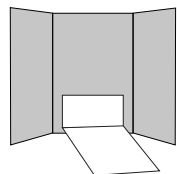
Location cards

M6



M6




Più moto
The river flows wide (Siroký tok Vltavy)

333

Picc.

Fl.

Ob.

Cl. (A)

Fag.

Cor. (E) I II

Cor. (E) III IV

Tr. (E)

Tbni. A. T.

Tbn. B

Tuba

Timp.

Trgl.

Arpa

VI. I

VI. II

Vla.

Vc. I

Vc. II

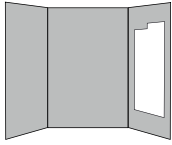
Cb.

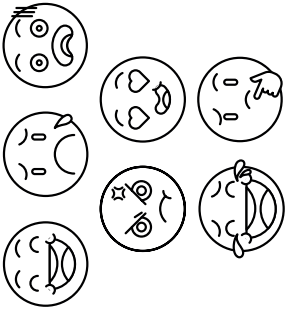
ff

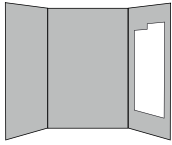
f

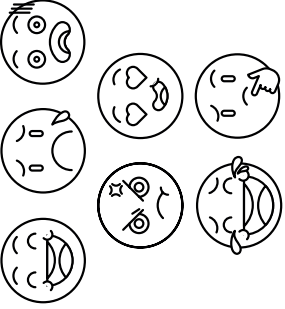
8





Emotions		
St. John's Rapids	The river flows wide	Výšehrad motif



Emotions		
St. John's Rapids	The river flows wide	Výšehrad motif



Bedřich Smetana's personal life was overshadowed by tragic losses. With his first wife, Katerzina, he had four daughters. Three of them died of diseases common at the time at a very young age. And this happened over the course of two years! After his wife's early death, Bedřich married again. His life was also marked by health problems, including becoming progressively deaf. Despite his deafness, he wrote his most successful compositions during the last years of his life. He died at the age of 60 on May 12, 1884.

Friedrich was a great pianist. He composed a lot of dance music. He also played and conducted his music at various events. In Prague, Friedrich founded a music school, which he directed until 1856. At that time, Bohemia was part of the Austrian Empire, but the Czechs were oppressed. Due to his home country's difficult political situation, Friedrich moved to Sweden (Gothenburg) in 1856.

When he returned a few years later, he changed his name to Bedřich and began composing music in the Czech style.

Composer Smetana also worked as a music critic and later became first conductor at the National Theater in Prague. He wrote music inspired by nature and stories from his homeland. He painted landscapes through music. His most famous piece is called 'Vltava' (or 'The Moldau'). His opera 'The Bartered Bride' is also very well known - with the use of funny melodies, Smetana's opera shows how people fall in love and have great adventures.

Friedrich Smetana was born on March 2, 1824 in Lytomišl (pronounced: lay-toe-meeshl) in Bohemia. He was his parents' eleventh child! Little Friedrich enjoyed a happy childhood. His father owned a brewery and was quite wealthy. The family lived in a large, bright apartment. From the windows you could see the castle. Friedrich was fashionably dressed and never suffered from cold or hunger. Many families played music back then, including the Smetanas. Friedrich loved music. He learned to play the violin at the age of 4 and composed his first piece at the age of 8.



Bedřich Smetana's personal life was overshadowed by tragic losses. With his first wife, Katerzina, he had four daughters. Three of them died of diseases common at the time at a very young age. And this happened over the course of two years! After his wife's early death, Bedřich married again. His life was also marked by health problems, including becoming progressively deaf. Despite his deafness, he wrote his most successful compositions during the last years of his life. He died at the age of 60 on May 12, 1884.

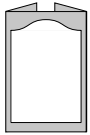
Friedrich was a great pianist. He composed a lot of dance music. He also played and conducted his music at various events. In Prague, Friedrich founded a music school, which he directed until 1856. At that time, Bohemia was part of the Austrian Empire, but the Czechs were oppressed. Due to his home country's difficult political situation, Friedrich moved to Sweden (Gothenburg) in 1856.

When he returned a few years later, he changed his name to Bedřich and began composing music in the Czech style.

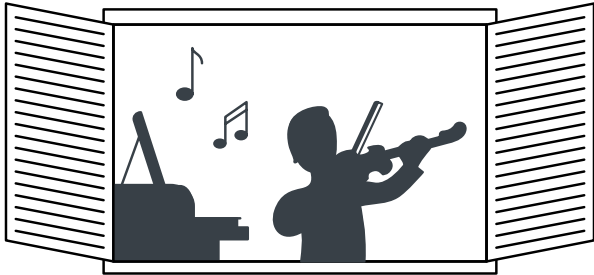
Composer Smetana also worked as a music critic and later became first conductor at the National Theater in Prague. He wrote music inspired by nature and stories from his homeland. He painted landscapes through music. His most famous piece is called 'Vltava' (or 'The Moldau'). His opera 'The Bartered Bride' is also very well known - with the use of funny melodies, Smetana's opera shows how people fall in love and have great adventures.

Friedrich Smetana was born on March 2, 1824 in Lytomišl (pronounced: lay-toe-meeshl) in Bohemia. He was his parents' eleventh child! Little Friedrich enjoyed a happy childhood. His father owned a brewery and was quite wealthy. The family lived in a large, bright apartment. From the windows you could see the castle. Friedrich was fashionably dressed and never suffered from cold or hunger. Many families played music back then, including the Smetanas. Friedrich loved music. He learned to play the violin at the age of 4 and composed his first piece at the age of 8.

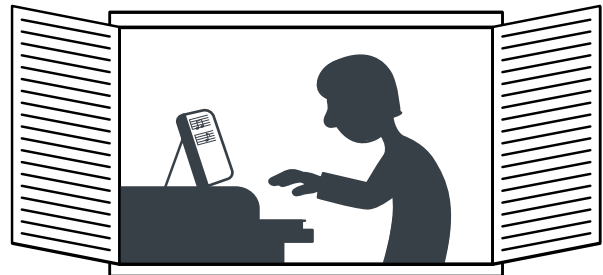




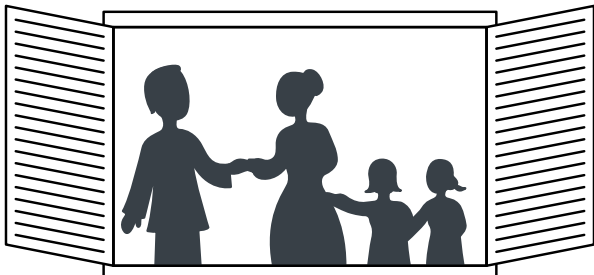
Smetana's life chapters



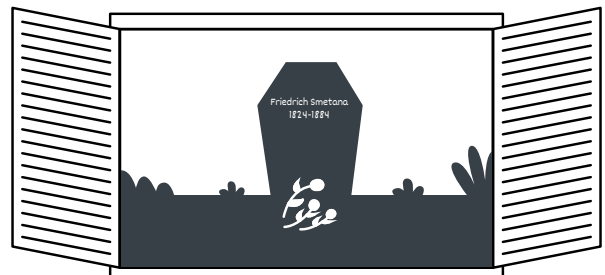
Empty space for notes or drawing.



Empty space for notes or drawing.

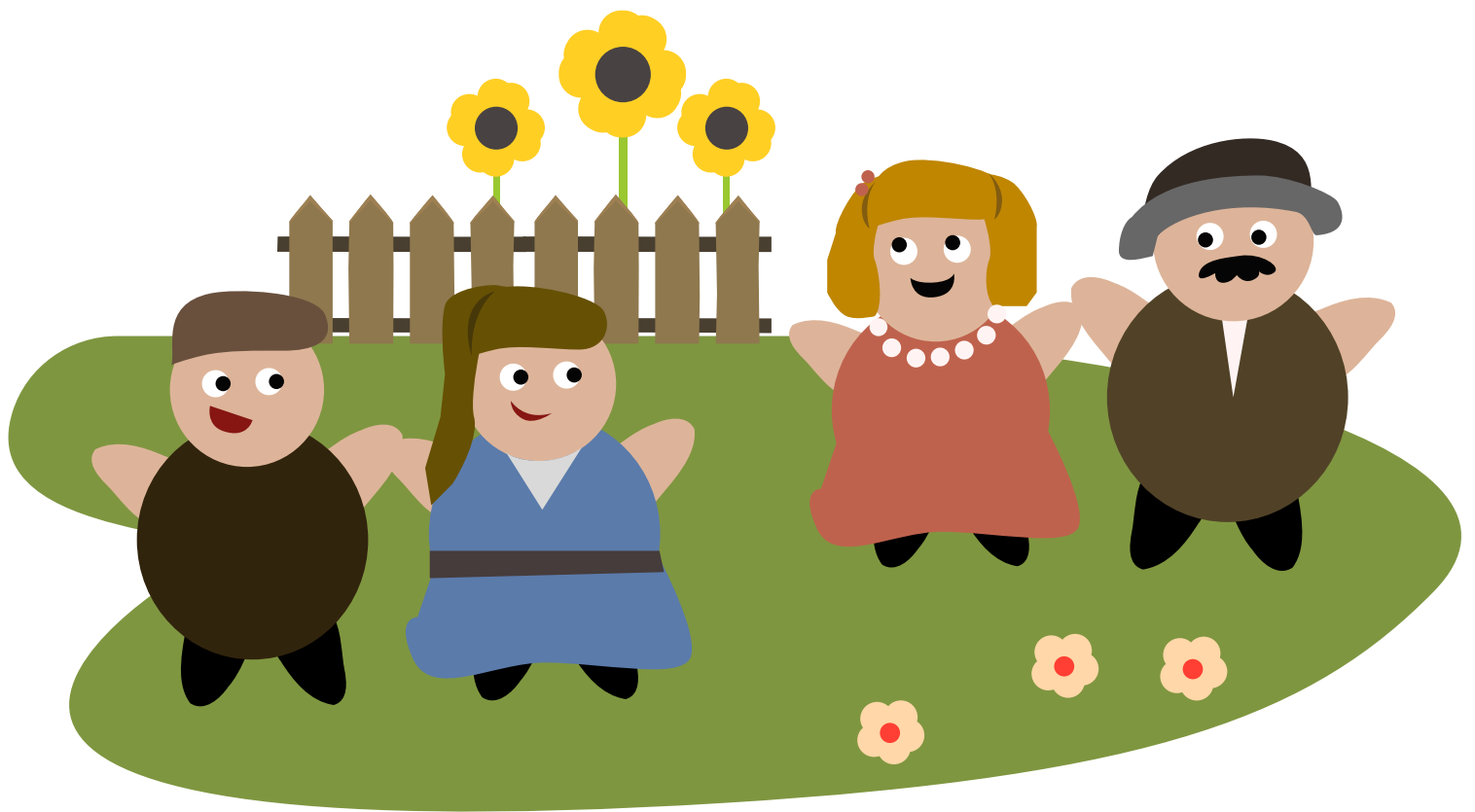


Empty space for notes or drawing.

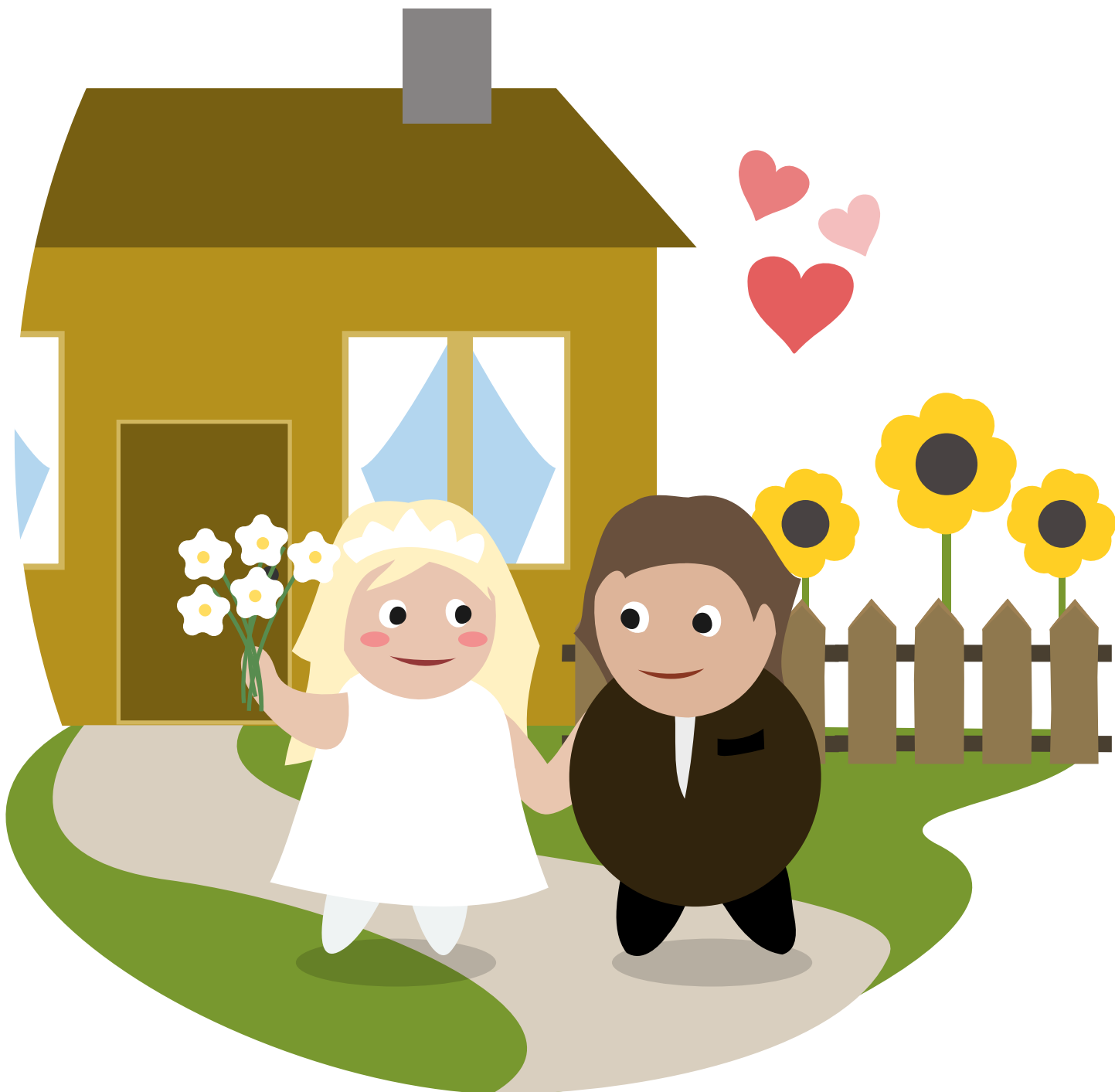


Empty space for notes or drawing.





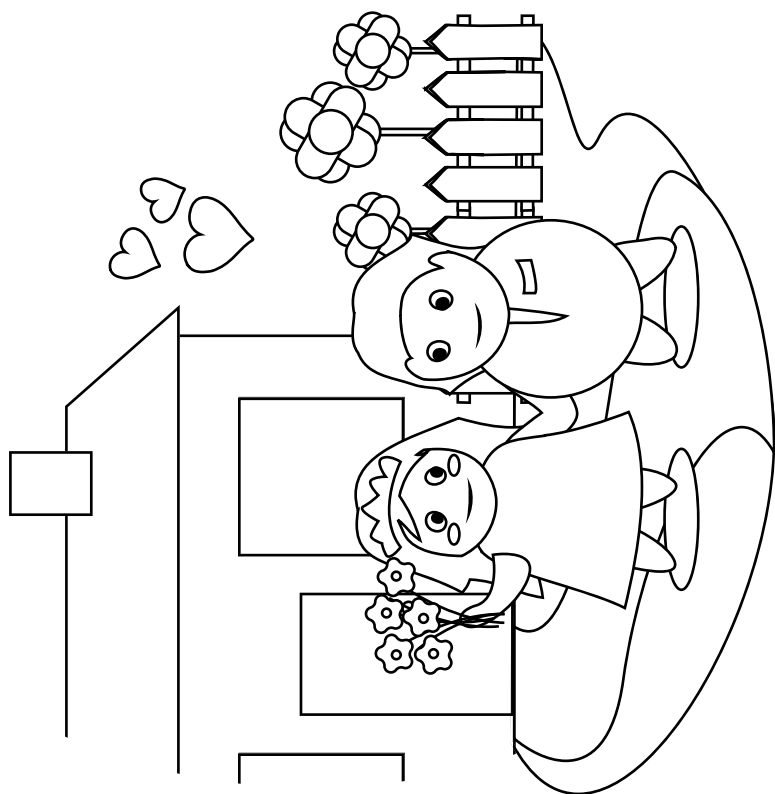












quiet

bright

playful

soft

graceful

lost

cheerful

lively

glowing

pleasant

dreamy

mysterious

happy

enchanting

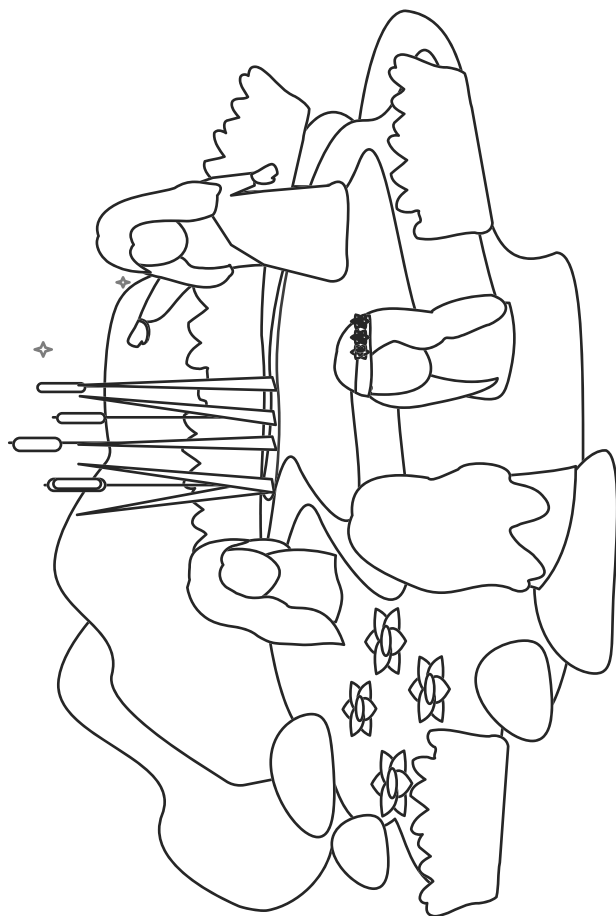
funny

carefree

gloomy

atmospheric

arrogant



Romantic - true / false

True False

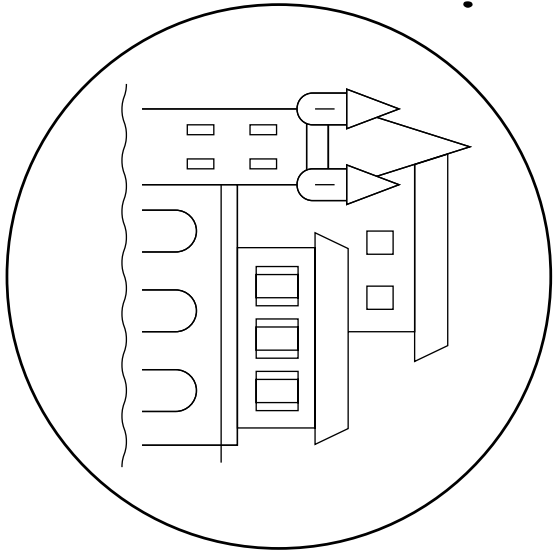
1	Symphonic poems are a special genre of music which emerged during the Romantic period.	<input type="radio"/>	<input type="radio"/>
2	For Romantic artists, imagination and feelings were not very important.	<input type="radio"/>	<input type="radio"/>
3	Artists of this period found their main inspirations in nature, fairy tales, legends and folk dances.	<input type="radio"/>	<input type="radio"/>
4	The name Romantic or Romanticism found its roots in old stories from the Middle Ages.	<input type="radio"/>	<input type="radio"/>
5	Romantic stories were often about happy love.	<input type="radio"/>	<input type="radio"/>
6	The Romantic hero was usually a young and outstanding poet, a traveller, a popular leader, highly sensitive and emotional, a genius!	<input type="radio"/>	<input type="radio"/>
7	Romantic artists enjoyed painting pictures of landscapes.	<input type="radio"/>	<input type="radio"/>
8	Romantic artists only painted pictures of places from their homeland.	<input type="radio"/>	<input type="radio"/>

Romantic - true / false

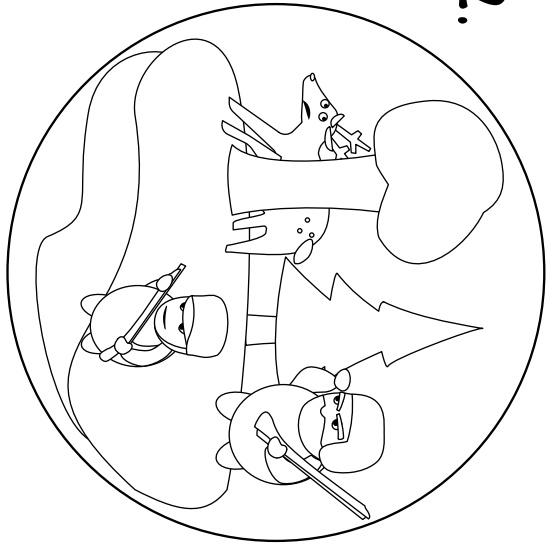
True False

1	Symphonic poems are a special genre of music which emerged during the Romantic period.	<input type="radio"/>	<input type="radio"/>
2	For Romantic artists, imagination and feelings were not very important.	<input type="radio"/>	<input type="radio"/>
3	Artists of this period found their main inspirations in nature, fairy tales, legends and folk dances.	<input type="radio"/>	<input type="radio"/>
4	The name Romantic or Romanticism found its roots in old stories from the Middle Ages.	<input type="radio"/>	<input type="radio"/>
5	Romantic stories were often about happy love.	<input type="radio"/>	<input type="radio"/>
6	The Romantic hero was usually a young and outstanding poet, a traveller, a popular leader, highly sensitive and emotional, a genius!	<input type="radio"/>	<input type="radio"/>
7	Romantic artists enjoyed painting pictures of landscapes.	<input type="radio"/>	<input type="radio"/>
8	Romantic artists only painted pictures of places from their homeland.	<input type="radio"/>	<input type="radio"/>

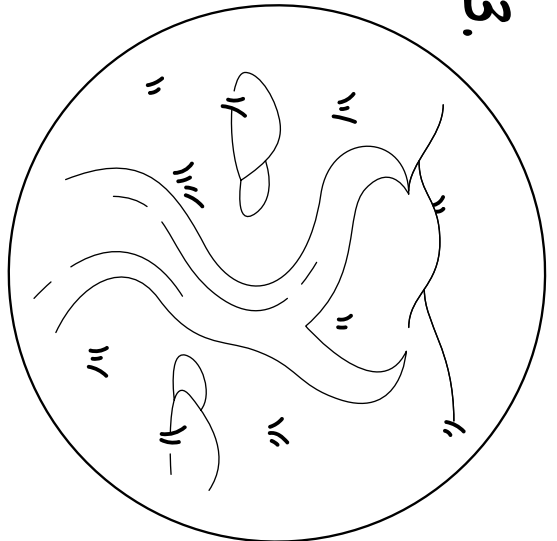
1.



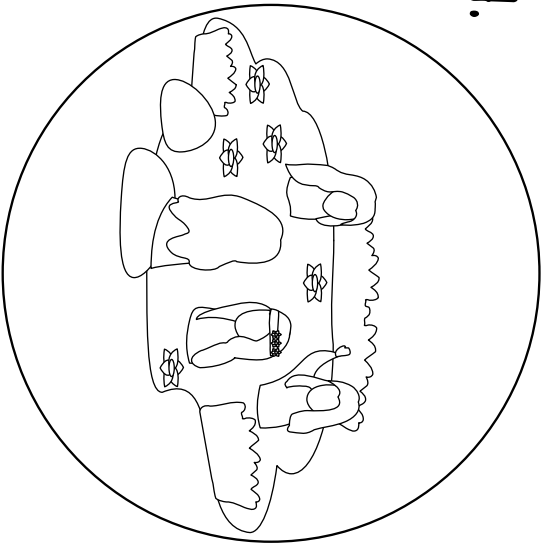
2.



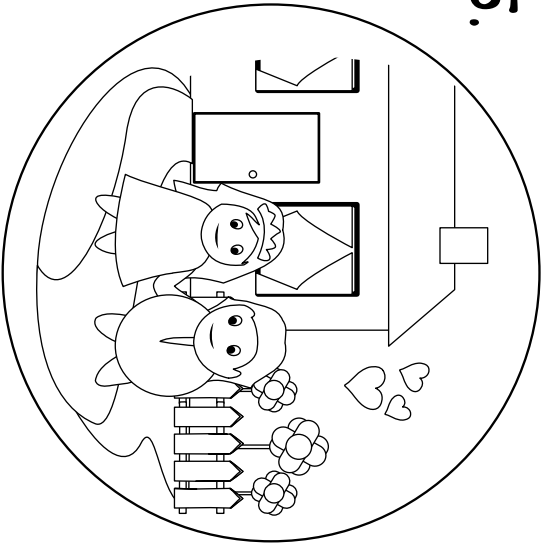
3.



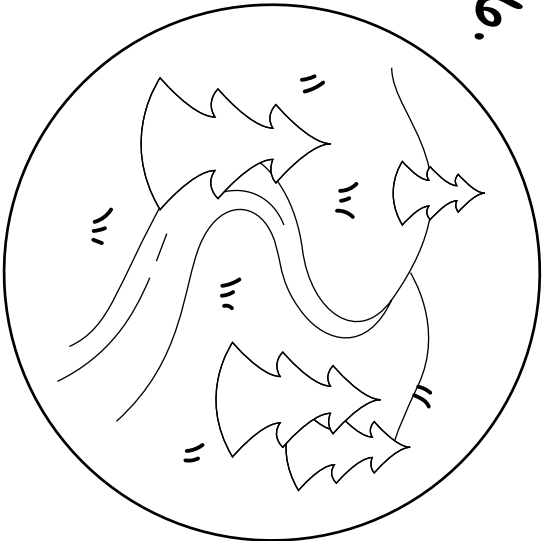
4.



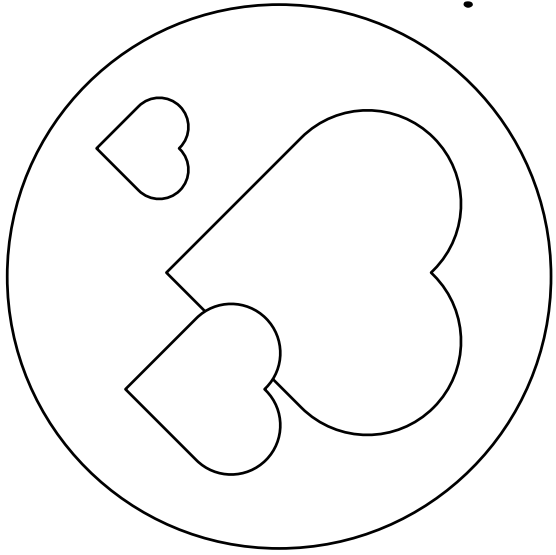
5.



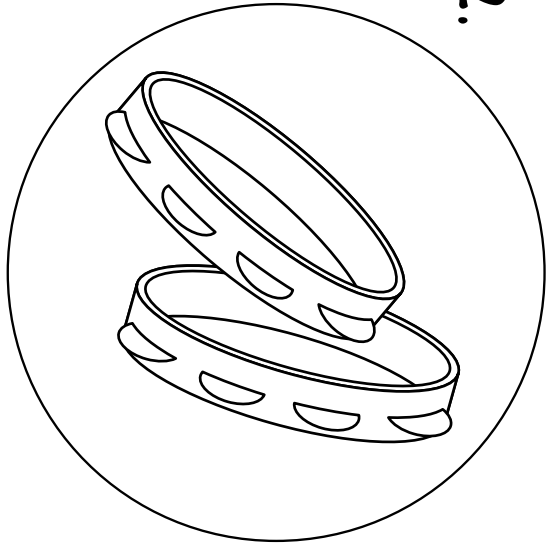
6.



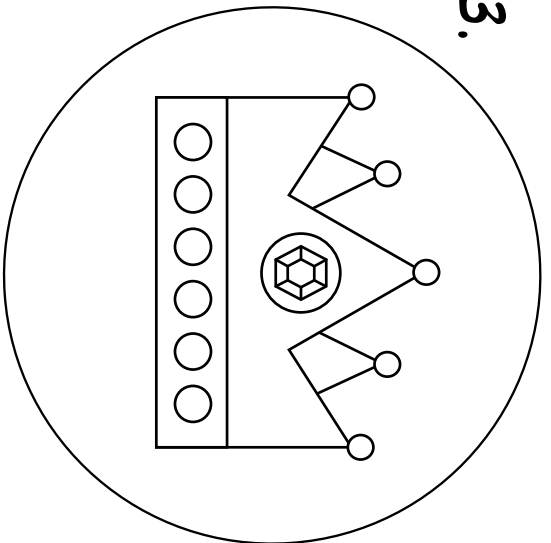
1.



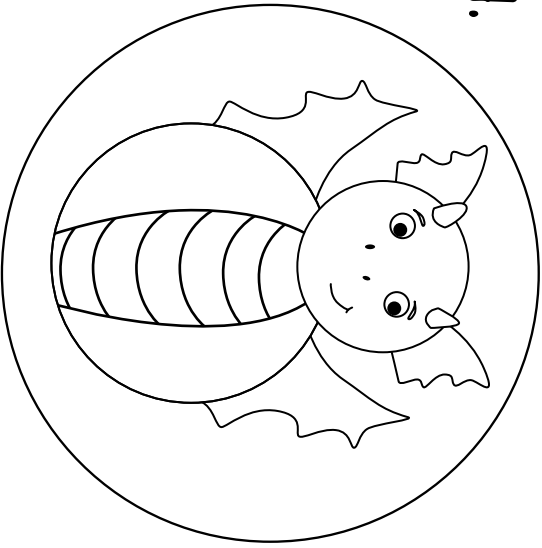
2.



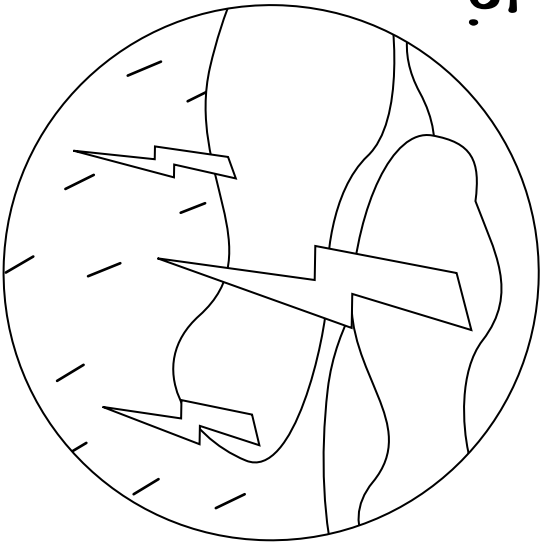
3.



4.



5.



6.

